

**SR...SW**

(GAC...F; GE...SW; GAC...T)

SNODI SFERICI A CONTATTO OBLIQUO

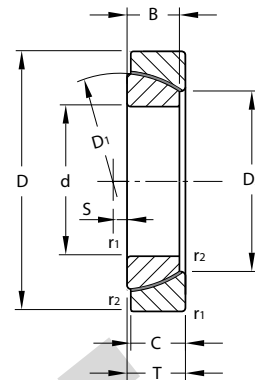
NON RICHIEDENTI MANUTENZIONE

ACCOPPIAMENTO : CROMO DURO SU PTFE

ANGULAR CONTACT SPHERICAL PLAIN BEARINGS

MAINTENANCE FREE

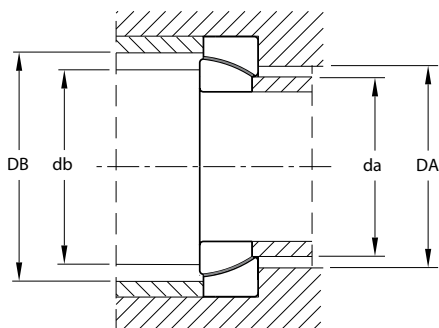
COUPLING:HARD CHROMIUM /PTFE



SIGLA CODE	d	D	T	B	C	TOLLERANZA TOLERANCE					D1	D2
						d	D	T	B	C		
mm.												
SR 25 SW	25	47	15	15	14	0 ± -0.012	0 ± -0.014	±0.20	0 ± -0.20	0 ± -0.20	42.5	31.4
SR 28 SW (1)	28	52	16	15	15	0 ± -0.012	0 ± -0.016	±0.20	0 ± -0.20	0 ± -0.20	47	35.7
SR 30 SW	30	55	17	17	15	0 ± -0.012	0 ± -0.016	±0.20	0 ± -0.20	0 ± -0.20	50	36.1
SR 32 SW (1)	32	58	17	16	16	0 ± -0.012	0 ± -0.016	±0.20	0 ± -0.24	0 ± -0.24	53	39.3
SR 35 SW	35	62	18	18	16	0 ± -0.012	0 ± -0.016	±0.20	0 ± -0.24	0 ± -0.24	56	42.4
SR 40 SW	40	68	19	19	17	0 ± -0.012	0 ± -0.016	±0.20	0 ± -0.24	0 ± -0.24	60	46.8
SR 45 SW	45	75	20	20	18	0 ± -0.012	0 ± -0.016	±0.20	0 ± -0.24	0 ± -0.24	66	52.9
SR 50 SW	50	80	20	20	19	0 ± -0.012	0 ± -0.016	±0.20	0 ± -0.30	0 ± -0.30	74	59.1
SR 55 SW (1)	55	90	23	23	20	0 ± -0.015	0 ± -0.018	±0.20	0 ± -0.30	0 ± -0.30	80	62
SR 60 SW	60	95	23	23	21	0 ± -0.015	0 ± -0.018	±0.20	0 ± -0.30	0 ± -0.30	86	68.1
SR 65 SW (1)	65	100	23	23	22	0 ± -0.015	0 ± -0.018	±0.20	0 ± -0.30	0 ± -0.30	92	75.6
SR 70 SW	70	110	25	25	23	0 ± -0.015	0 ± -0.018	±0.20	0 ± -0.30	0 ± -0.30	102	82.2
SR 75 SW (1)	75	115	25	25	24	0 ± -0.015	0 ± -0.018	±0.20	0 ± -0.30	0 ± -0.30	105	85.9
SR 80 SW	80	125	29	29	25.5	0 ± -0.015	0 ± -0.020	±0.20	0 ± -0.30	0 ± -0.30	115	90.5
SR 85 SW (1)	85	130	29	29	26.5	0 ± -0.020	0 ± -0.020	±0.20	0 ± -0.40	0 ± -0.40	120	96.9
SR 90 SW	90	140	32	32	28	0 ± -0.020	0 ± -0.020	±0.20	0 ± -0.40	0 ± -0.40	130	103.3
SR 95 SW	95	145	32	32	29.5	0 ± -0.020	0 ± -0.020	±0.20	0 ± -0.40	0 ± -0.40	130	107.7
SR 100 SW	100	150	32	32	31	0 ± -0.020	0 ± -0.020	±0.20	0 ± -0.40	0 ± -0.40	140	114.3
SR 105 SW (1)	105	160	35	35	32.5	0 ± -0.020	0 ± -0.025	±0.20	0 ± -0.40	0 ± -0.40	150	119.4
SR 110 SW (1)	110	170	38	38	34	0 ± -0.020	0 ± -0.025	±0.20	0 ± -0.40	0 ± -0.40	160	125.8
SR 120 SW	120	180	38	38	37	0 ± -0.020	0 ± -0.025	±0.20	0 ± -0.40	0 ± -0.40	170	135.4
SR 130 SW (1)	130	200	45	45	43	0 ± -0.025	0 ± -0.030	+0.35 -0.025	0 ± -0.50	0 ± -0.50	190	148
SR 140 SW (1)	140	210	45	45	43	0 ± -0.025	0 ± -0.030	+0.35 -0.025	0 ± -0.50	0 ± -0.50	200	160.6
SR 150 SW (1)	150	225	48	48	46	0 ± -0.025	0 ± -0.030	+0.35 -0.025	0 ± -0.50	0 ± -0.50	213	170.9
SR 160 SW (1)	160	240	51	51	49	0 ± -0.025	0 ± -0.030	+0.35 -0.025	0 ± -0.50	0 ± -0.50	225	181.4
SR 170 SW (1)	170	260	57	57	55	0 ± -0.025	0 ± -0.035	+0.35 -0.025	0 ± -0.50	0 ± -0.50	250	194.3
SR 180 SW (1)	180	280	64	64	61	0 ± -0.025	0 ± -0.035	+0.35 -0.025	0 ± -0.50	0 ± -0.50	260	205.5
SR 190 SW (1)	190	290	64	64	62	0 ± -0.030	0 ± -0.035	+0.35 -0.025	0 ± -0.50	0 ± -0.50	275	211.8
SR 200 SW (1)	200	310	70	70	66	0 ± -0.030	0 ± -0.035	+0.35 -0.025	0 ± -0.60	0 ± -0.60	290	229.2
SR 220 SW (1)	220	340	76	72	72	0 ± -0.030	0 ± -0.040	+0.35 -0.025	0 ± -0.60	0 ± -0.60	320	251.6
SR 240 SW (1)	240	360	76	72	72	0 ± -0.030	0 ± -0.040	+0.35 -0.025	0 ± -0.60	0 ± -0.60	340	273.8
SR 260 SW (1)	260	400	87	83	83	0 ± -0.035	0 ± -0.040	+0.35 -0.025	0 ± -0.60	0 ± -0.60	375	298.8
SR 280 SW (1)	280	420	87	83	83	0 ± -0.035	0 ± -0.045	+0.35 -0.025	0 ± -0.70	0 ± -0.70	400	312.5
SR 300 SW (1)	300	460	100	96	96	0 ± -0.035	0 ± -0.045	+0.35 -0.025	0 ± -0.70	0 ± -0.70	430	341.2

(1) DISPONIBILITA' E PREZZO A RICHIESTA

(1) AVAILABILITY AND PRICE UPON REQUEST



d	S	FATTORI DI CARICO RADIALE RADIAL LOAD FACTORS		r1	r2	DIMENSIONI DI MONTAGGIO MOUNTING DIMENSIONS				PESO IN Kg. WEIGHT Kg.	
		Dinamico Dynamic C	Statico Static Co			da max.	db max.	DA min.	DB min.		
mm.		KN		mm.						Kg.	
25	1	71	140	0.6	-	0.2	30.1	39.5	34	43	0.14
28	1	90	180	1.0	-	0.3	34.4	42	40	47.5	0.18
30	2	95	190	1.0	-	0.3	34.6	45	40.5	50.5	0.22
32	2.5	102	204	1.0	-	0.3	37.9	47.5	44	54	0.24
35	2	116	232	1.0	-	0.3	41.1	50	47	57	0.28
40	1.5	134	270	1.0	-	0.3	45.5	54	52	61	0.34
45	1.5	160	320	1.0	-	0.3	51.7	60	58	67	0.43
50	4	176	355	1.0	-	0.3	57.9	67	65	75	0.47
55	4	220	440	1.5	-	0.6	60.7	71	70	81	0.70
60	5	240	480	1.5	-	0.6	66.9	77	76	87	0.75
65	5	260	520	1.5	-	0.6	74.4	83	84	93	0.80
70	7	315	630	1.5	-	0.6	80.9	92	90	104	1.0
75	7	325	655	1.5	-	0.6	84.7	95	94	107	1.1
80	10	375	750	1.5	-	0.6	88	104	99	117	1.6
85	10	400	800	1.5	-	0.6	94.4	109	105	122	1.7
90	11	480	965	2.0	-	0.6	100.8	118	112	132	2.2
95	8	525	1049	2.0	-	0.6	105.4	119	117	132	2.3
100	12	577	1151	2.0	-	0.6	112	128	123	142	2.4
105	14	610	1220	2.5	-	0.6	116.8	137	129	152	3.0
110	15	710	1430	2.5	-	0.6	123.2	146	135	162	3.7
120	17	765	1530	2.5	-	0.6	132.9	155	145	172	4.0
130	20	965	1930	2.5	-	0.6	143.9	174	158	192	6.0
140	20	1020	2040	2.5	-	0.6	156.9	184	171	202	6.4
150	21	1180	2360	3.0	-	1.0	167.1	194	184	216	7.9
160	21	1340	2900	3.0	-	1.0	177.7	206	195	228	9.6
170	27	1660	3350	3.0	-	1.0	190.4	228	208	253	13.0
180	21	2000	4170	3.0	-	1.0	201.7	240	220	263	17.5
190	29	2250	4490	3.0	-	1.0	207.9	252	226	278	18.0
200	26	2520	5040	3.0	-	1.0	224.1	268	244	293	23.0
220	30	2850	5700	4.0	-	1.0	246.5	296	267	324	30.0
240	32	3050	6100	4.0	-	1.0	268.9	315	290	344	32.5
260	33.5	3900	7800	5.0	-	1.1	293.8	347	318	379	48.0
280	45	4150	8300	5.0	-	1.1	307.3	367	332	404	51.0
300	38	5200	10400	5.0	-	1.1	336.2	399	362	435	73.0