

**SRB...
SRT... - 2RS**

(GE...C; GE...UK; GE...UK-2RS; GE...TXE-2LS; GE...TXA-2LS; GE...ET-2RS)

SNODI SFERICI RADIALI
ISO 12240-1 SERIE E
NON RICHIEDENTI MANUTENZIONE
ACCOPPIAMENTO: CROMO DURO SU PTFE

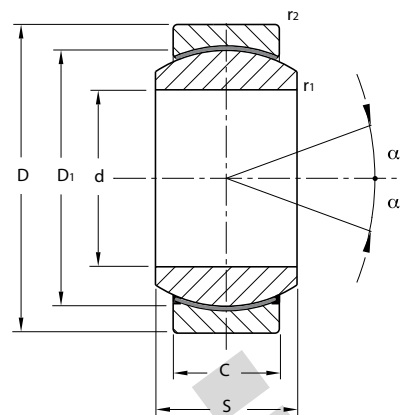
SPHERICAL PLAIN BEARINGS

ISO 12240-1 SERIES E

MAINTENANCE FREE

COUPLING: HARD CHROMIUM ON PTFE

**ALTA RESISTENZA
HIGH RESISTANCE**



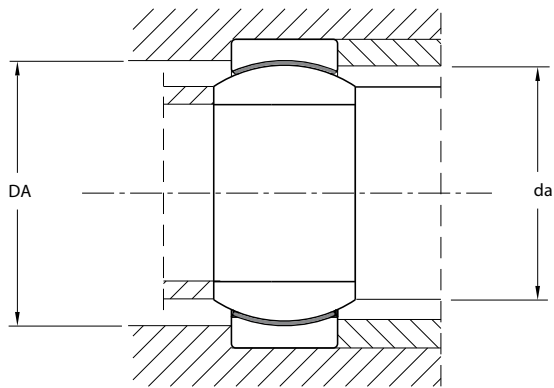
SIGLA CUSCINETTO SENZA TENUTA CODE BEARING WITHOUT PROTECTION RINGS	SIGLA CUSCINETTO CON TENUTA CODE BEARING WITH PROTECTION RINGS	d	D	S	C	TOLLERANZA TOLERANCE					
						d	D	S	C	r1	r2
mm.											
SRB 6		6	14	6	4	0 ± -0.008	0 ± -0.008	0 ± -0.12	0 ± -0.24	0.3	0.3
SRB 8		8	16	8	5	0 ± -0.008	0 ± -0.008	0 ± -0.12	0 ± -0.24	0.3	0.3
SRB 10		10	19	9	6	0 ± -0.008	0 ± -0.009	0 ± -0.12	0 ± -0.24	0.3	0.3
SRB 12		12	22	10	7	0 ± -0.008	0 ± -0.009	0 ± -0.12	0 ± -0.24	0.3	0.3
SRB 15		15	26	12	9	0 ± -0.008	0 ± -0.009	0 ± -0.12	0 ± -0.24	0.3	0.3
SRB 17	SRT 17 - 2RS	17	30	14	10	0 ± -0.008	0 ± -0.009	0 ± -0.12	0 ± -0.24	0.3	0.3
SRB 20	SRT 20 - 2RS	20	35	16	12	0 ± -0.010	0 ± -0.011	0 ± -0.12	0 ± -0.24	0.3	0.3
SRB 25	SRT 25 - 2RS	25	42	20	16	0 ± -0.010	0 ± -0.011	0 ± -0.12	0 ± -0.24	0.6	0.3
SRB 30	SRT 30 - 2RS	30	47	22	18	0 ± -0.010	0 ± -0.011	0 ± -0.12	0 ± -0.24	0.6	0.6
	SRT 35 - 2RS	35	55	25	20	0 ± -0.012	0 ± -0.013	0 ± -0.12	0 ± -0.30	0.6	0.6
	SRT 40 - 2RS	40	62	28	22	0 ± -0.012	0 ± -0.013	0 ± -0.12	0 ± -0.30	0.6	1.0
	SRT 45 - 2RS	45	68	32	25	0 ± -0.012	0 ± -0.013	0 ± -0.12	0 ± -0.30	0.6	1.0
	SRT 50 - 2RS	50	75	35	28	0 ± -0.012	0 ± -0.013	0 ± -0.12	0 ± -0.30	0.6	1.0
	SRT 60 - 2RS	60	90	44	36	0 ± -0.015	0 ± -0.015	0 ± -0.15	0 ± -0.40	0.6	1.0
	SRT 70 - 2RS	70	105	49	40	0 ± -0.015	0 ± -0.015	0 ± -0.15	0 ± -0.40	1.0	1.0
	SRT 80 - 2RS	80	120	55	45	0 ± -0.015	0 ± -0.015	0 ± -0.15	0 ± -0.40	1.0	1.0
	SRT 90 - 2RS	90	130	60	50	0 ± -0.020	0 ± -0.018	0 ± -0.20	0 ± -0.50	1.0	1.0
	SRT 100 - 2RS	100	150	70	55	0 ± -0.020	0 ± -0.018	0 ± -0.20	0 ± -0.50	1.0	1.0
	SRT 110 - 2RS	110	160	70	55	0 ± -0.020	0 ± -0.025	0 ± -0.20	0 ± -0.50	1.0	1.0
	SRT 120 - 2RS	120	180	85	70	0 ± -0.020	0 ± -0.025	0 ± -0.20	0 ± -0.50	1.0	1.0
	SRT 140 - 2RS	140	210	90	70	0 ± -0.025	0 ± -0.030	0 ± -0.25	0 ± -0.60	1.0	1.0
	SRT 160 - 2RS (1)	160	230	105	80	0 ± -0.025	0 ± -0.030	0 ± -0.25	0 ± -0.60	1.0	1.0
	SRT 180 - 2RS (1)	180	260	105	80	0 ± -0.025	0 ± -0.035	0 ± -0.25	0 ± -0.70	1.0	1.0
	SRT 200 - 2RS (1)	200	290	130	100	0 ± -0.030	0 ± -0.035	0 ± -0.30	0 ± -0.70	1.1	1.1
	SRT 220 - 2RS (1)	220	320	135	100	0 ± -0.030	0 ± -0.040	0 ± -0.30	0 ± -0.80	1.1	1.1
	SRT 240 - 2RS (1)	240	340	140	100	0 ± -0.030	0 ± -0.040	0 ± -0.30	0 ± -0.80	1.1	1.1
	SRT 260 - 2RS (1)	260	370	150	110	0 ± -0.035	0 ± -0.040	0 ± -0.35	0 ± -0.80	1.1	1.1
	SRT 280 - 2RS (1)	280	400	155	120	0 ± -0.035	0 ± -0.040	0 ± -0.35	0 ± -0.80	1.1	1.1
	SRT 300 - 2RS (1)	300	430	165	120	0 ± -0.035	0 ± -0.045	0 ± -0.35	0 ± -0.90	1.1	1.1

(1) DISPONIBILITÀ E PREZZO A RICHIESTA

NOTA: PER EVITARE IL DANNEGGIAMENTO O LA PERDITA DELLE PROTEZIONI (-2RS) È NECESSARIO IMPEDIRE ALL'ANELLO INTERNO DI RUOTARE AL DI FUORI DELL'ANELLO ESTERNO. TALE AVVERTENZA SI RIFERISCE IN PARTICOLARE MODO AGLI SNODI CON ANELLO ESTERNO DIVISO IN DUE METÀ, TENUTE INSIEME MEDIANTE UN NASTRO DI ACCIAIO.

(1) AVAILABILITY AND PRICE UPON REQUEST

NOTES: TO AVOID THE DAMAGE OR THE LOSS OF THE PROTECTION RINGS(-2RS) DO NOT ALLOW INNER BALL TO ROTATE OUT OF THE EXTERNAL HOUSING.



d	D1	ANGOLO DI OSCILLAZIONE α SWINGING ANGLE α	FATTORI DI CARICO LIMITE LOAD FACTORS		GIUOCO RADIALE RADIAL CLEARANCE	DIMENSIONI DI MONTAGGIO MOUNTING DIMENSIONS		PESO IN Kg. WEIGHT Kg.
			Dinamico Dynamic C	Statico Static Co		da max.	DA min.	
mm.		α°	KN			mm.		Kg.
6	10	13	3,6	9	0 - 0.032	8	9.6	0.004
8	13	15	5,85	14,6	0 - 0.032	10.2	12.5	0.007
10	16	12	8,65	21,6	0 - 0.032	13.2	15.5	0.01
12	18	11	11,4	28,5	0 - 0.032	14.9	17.5	0.01
15	22	8	17,6	44	0 - 0.040	18.4	21	0.02
17	25	10	22.4 - 48 (1)	56 - 81 (1)	0 - 0.040	20.7	24	0.03
20	29	9	31.5 - 68 (1)	78 - 112 (1)	0 - 0.040	24.1	27.5	0.06
25	35.5	7	51 - 130 (1)	127 - 225 (1)	0 - 0.050	29.3	33	0.11
30	40.7	6	65.5 - 170 (1)	166 - 285 (1)	0 - 0.050	34.2	38	0.14
35	47	6	220 (1)	370 (1)	0 - 0.050	39.7	44.5	0.22
40	53	7	280 (1)	465 (1)	0 - 0.060	45	51	0.30
45	60	7	360 (1)	600 (1)	0 - 0.060	50.7	57	0.40
50	66	6	440 (1)	735 (1)	0 - 0.060	55.9	63	0.54
60	80	6	690 (1)	1155 (1)	0 - 0.060	66.8	75	1.00
70	92	6	880 (1)	1470 (1)	0 - 0.072	77.8	87	1.50
80	105	6	1135 (1)	1900 (1)	0 - 0.072	89.4	99	2.20
90	115	5	1375 (1)	2320 (1)	0 - 0.072	98.1	108	2.70
100	130	7	1725 (1)	2860 (1)	0 - 0.085	109.5	123	4.30
110	140	6	1860 (1)	3100 (1)	0 - 0.085	121.2	134	4.70
120	160	6	2700 (1)	4500 (1)	0 - 0.085	135.5	150	8.00
140	180	7	3010 (1)	5020 (1)	0 - 0.085	155.8	173	11.00
160	200	8	3840 (1)	6400 (1)	0 - 0.100	170.2	191	13.50
180	225	6	4320 (1)	7200 (1)	0 - 0.100	198.9	219	18.50
200	250	7	6000 (1)	10000 (1)	0 - 0.100	213.5	239	28.00
220	275	8	6600 (1)	11000 (1)	0 - 0.100	239.5	267	35.50
240	300	8	7200 (1)	12000 (1)	0 - 0.100	265.3	295	40.00
260	325	7	8650 (1)	14300 (1)	0 - 0.110	288.3	319	50.00
280	350	6	10050 (1)	16750 (1)	0 - 0.110	313.8	342	64.00
300	375	7	10800 (1)	18000 (1)	0 - 0.110	336.7	370	75.00

(1) FATTORE DI CARICO PER ESECUZIONE DI CUSCINETTO SRT...-2RS

(1) LOAD FACTORS BEARING SRT...-2RS